



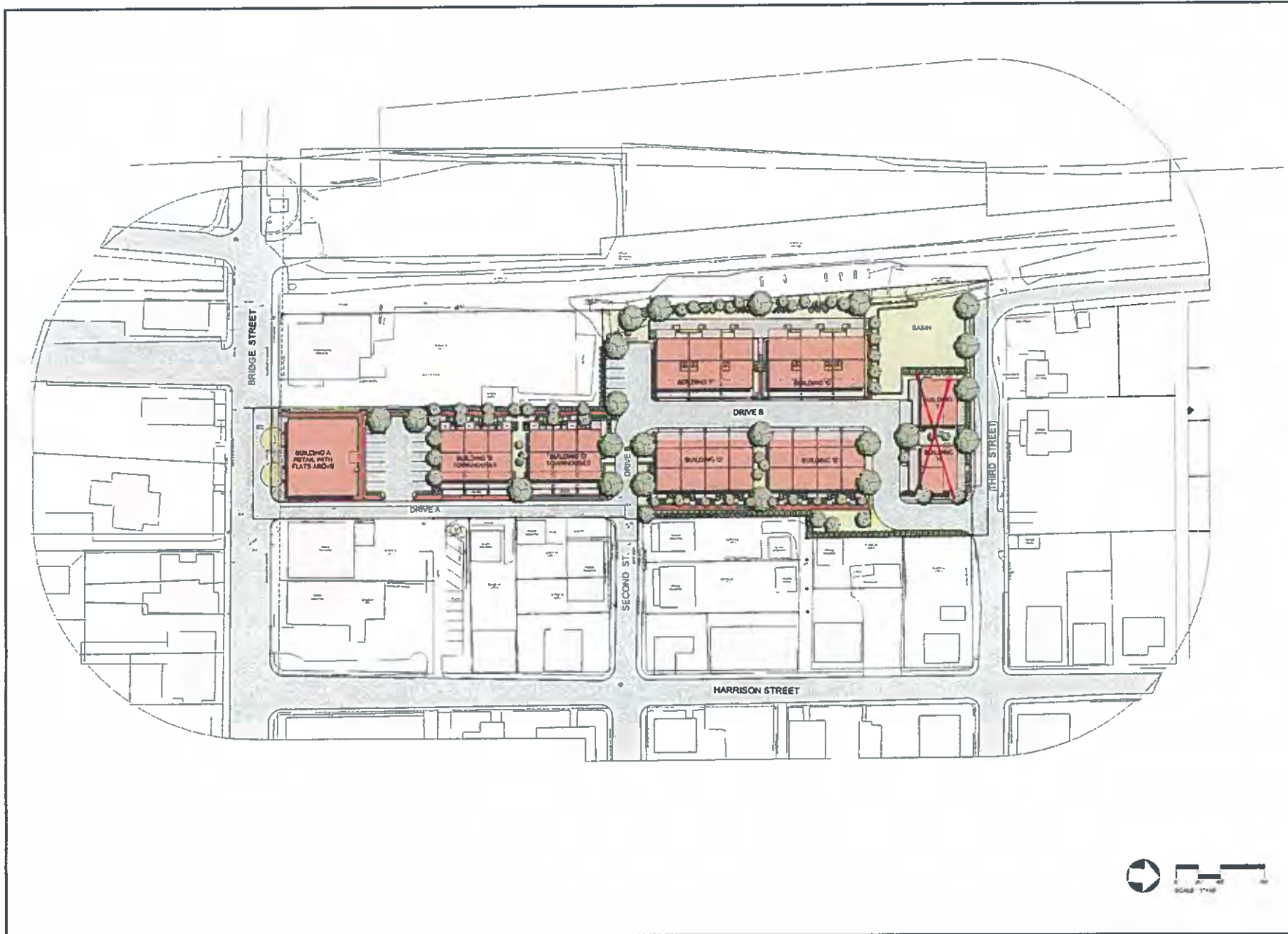
Aerial Perspective

PERSPECTIVE : RIVER MILLS AT FRENCHTOWN
BOROUGH OF FRENCHTOWN, HUNTERDON COUNTY, NEW JERSEY

Frenchtown Bridge Street LLC



DATE: 06/04/2011



Versions	
No.	Description
1	REVISED FILE SITE PLAN
1	10/1/2018 FILE ASSEMBLED SITE PLAN

Redeveloper/Applicant
 Frenchtown Bridge Street, LLC
 228 South Main Street
 New Hope, PA 18958
 (215) 862-1014



Thomas Stevens
 D. Thomas Stevens
 Licensed Landscape Architect
 Professional License Number: RAAS00214

RIVER MILLS AT FRENCHTOWN
 Borough of Frenchtown
 Hunterdon County, New Jersey

OVERALL LANDSCAPE PLAN

Scale: 1" = 40'
 Sheet No.

L3.0



Frenchtown Inn

Blkg. A

Alchemy Retail Shop

Bridge Street Elevation
Scale: 1/8" = 1'-0"

Date: October 23, 2016

Building A

CONCEPT ELEVATION : RIVER MILLS AT FRENCHTOWN
BOROUGH OF FRENCHTOWN, HUNTERDON COUNTY, NEW JERSEY

Frenchtown Bridge Street LLC





Bldg. C

Bldg. B

West Elevation
scale: 3/16"=1'-0"

Date: October 25, 2006

Building B&C

CONCEPT ELEVATION : RIVER MILLS AT FRENCHTOWN
BOROUGH OF FRENCHTOWN, HUNTERDON COUNTY, NEW JERSEY

Frenchtown Bridge Street LLC





08/20/11

08/20/11

West Elevation

CONCEPT ELEVATION : RIVER MILLS AT FRENCHTOWN
BOROUGH OF FRENCHTOWN, HUNTERDON COUNTY, NEW JERSEY

Frenchtown Bridge Street LLC

10/17/2010 2:00 PM

Building D&I:





02041

02111

Water Front Elevation
1/11/17

CONCEPT ELEVATION : RIVER MILLS AT FRENCHTOWN
BOROUGH OF FRENCHTOWN, HUNTERDON COUNTY, NEW JERSEY

Frenchtown Bridge Street LLC

The Howard 200
Building F&G

MINNO & WASKO
ARCHITECTS AND PLANNERS